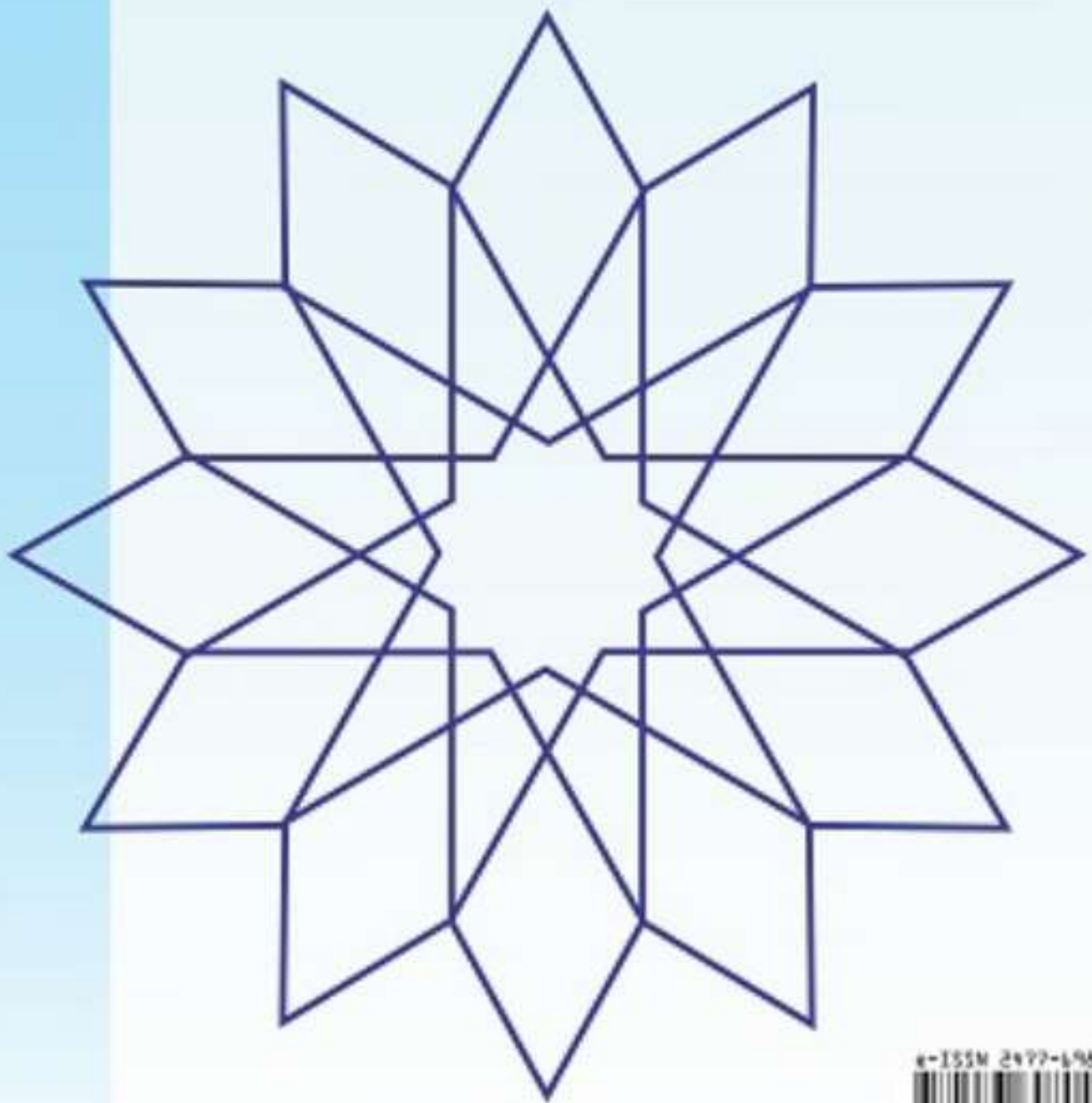


khazanah informatika

Jurnal Ilmiah Ilmu Komputer dan Informatika





Chief Editor

Husni Thamrin, Universitas Muhammadiyah Surakarta

Board of Editors

Arkham Zakhri Rahman, Institut Teknologi Sumatera
Asslia Johar Latipah, Universitas Muhammadiyah Kalimantan Timur
Didiek Wiyono, Universitas Sebelas Maret
Dimas Aryo Anggoro, Universitas Muhammadiyah Surakarta
Fajar Suryawan, Universitas Muhammadiyah Surakarta
Gunawan Ariyanto, Universitas Muhammadiyah Surakarta
Nurgiyatna, Universitas Muhammadiyah Surakarta
Teguh Bharata Adji, Universitas Gadjah Mada
Yogiek Indra Kurniawan, Universitas Jenderal Soedirman
Ferda Ernawan, Universiti Malaysia Pahang, Malaysia
Dedi Gunawan, Universitas Muhammadiyah Surakarta

Managing Editor

Ahmad Nur Ridlo, Universitas Muhammadiyah Surakarta

Peer Reviewers

Each publication involves various numbers of reviewers. The list of reviewers for the current volume can be found on the back cover.

Khazanah Informatika: Jurnal Ilmu Komputer dan Informatika is a national scientific journal that publishes scientific research papers/articles or reviews in the field of Computer Systems and Informatics. The journal is accredited "Sinta 2" according to the decree of DRPM Ministry of Research and Higher Education number 21/E/KPT/2018 dated July 9th, 2018 which is valid since vol 2 issue 1 until vol 6 issue 2. The scope of this journal includes software engineering, information systems development, computer systems and computer networking. The journal is published by Muhammadiyah University Press (MUP), Universitas Muhammadiyah Surakarta.

Table of Contents

Corn Seeds Identification Based on Shape and Colour Features

Haddad Alwi Yafe, Ema Rachmawati, Esa Prakasa, Amin Nur 66-72
10.23917/khif.v6i2.10840

Performance Assessment of University Lecturers: A Data Mining Approach

Milkhatun, Alfi Ari Fakhrur Rizal, Ni Wayan Wiwin Asthiningsih, Asslia Johar Latipah 73-81
10.23917/khif.v6i2.9069

Design and Implementation of a Smart Home Security System Using Voice Command and Internet of Things

Heru Susanto, Agus Nurcahyo 82-94
10.23917/khif.v6i2.9320

Pesma Apps as Android-based Integrated Applications for Mahasantri Pesma KH Mas Mansur UMS

Bisrul Khafid, Devi Afriyantari Puspa Putri 95-102
10.23917/khif.v6i2.10494

Customer Satisfaction Analysis Based On SERVQUAL Method to Determine Service Level of Academic Information Systems on Higher Education

I.G.P. Asto Buditjahjanto 103-108
10.23917/khif.v6i2.10690

Combining Usability Testing with In-Depth Interview for Online Credit Hour Website Evaluation

Pristi Sukmasetya, Endah Ratna Arumi, Agus Setiawan 109-114
10.23917/khif.v6i2.10804

Application of Context-Aware and Collaborative Mobile Learning System Design Model in Interactive E-Book Reader Using Design Thinking Methods

Putut Aji Nalendro, Ratna Wardani 115-123
10.23917/khif.v6i2.10022

Virtual Reality Visualization of Tongkonan Traditional House as Promotional Media for Cultural Tourism using ADDIE Model	
<i>Cynthia Hayat, David Panggeso</i> 10.23917/khif.v6i2.11049	124-131
Combination of K-Means and Simple Additive Weighting in Deciding Locations and Strategies of University Marketing	
<i>Muhamad Ali Kasri, Handaru Jati</i> 10.23917/khif.v6i2.11281	132-141
Analysis of Communication Network Patterns of Home Industries (A Case Study in Tambaksari, Rowosari, Kendal)	
<i>Puteri Anidya Maulan, Danny Manongga, Irwan Sembiring</i> 10.23917/khif.v6i2.10468	142-150
Integration of Double Exponential Smoothing Damped Trend with Metaheuristic Methods to Optimize Forecasting Rupiah Exchange Rate against USD during COVID-19 Pandemic	
<i>Maftahatul Hakimah, Muchamad Kurniawan</i> 10.23917/khif.v6i2.9887	151-157
Application of the Certainty Factor and Forward Chaining Methods to a Goat Disease Expert System	
<i>Dwi Susanto, Abdul Fadlil, Anton Yudhana</i> 10.23917/khif.v6i2.10867	158-164
Performance Analysis of Isolation Forest Algorithm in Fraud Detection of Credit Card Transactions	
<i>Indra Waspada, Nurdin Bahtiar, Panji Wisnu Wirawan, Bagus Dwi Ari Awan</i> 10.23917/khif.v6i2.10520	165-175
The e-Learning Quality Model to Examine Students' Behavioral Intention to Use Online Learning Platform in a Higher Education Institution	
<i>Feby Artwodini Muqtadiroh, Anisah Herdiyanti, Noptrina Puspitasari</i> 10.23917/khif.v6i2.11344	176-183
Decision Support System for Selection of the Best Member at Junjung Biru Waste Bank Using the Composite Performance Index (CPI)	
<i>Fitri Purwaningtias, Maria Ulfa, Febi Franata</i> 10.23917/khif.v6i2.11058	184-189
Utilization of Gas Sensor Array and Principal Component Analysis to Identify Fish Decomposition Level	
<i>Budi Sumanto, Muhammad Fakhrurrifqi</i> 10.23917/khif.v6i2.11013	190-196

Performance Assessment of University Lecturers: A Data Mining Approach

Milkhatun¹, Alfi Ari Fakhur Rizal^{1*}, Ni Wayan Wiwin Asthiningsih¹, Asslia Johar Latipah²

*aافر597@umkt.ac.id

¹Department of Nursing
Universitas Muhammadiyah Kalimantan Timur
Samarinda

²Department of Informatics
Universitas Muhammadiyah Kalimantan Timur
Samarinda

Abstract- A lecturer with a good performance has a positive impact on the quality of teaching and learning. The said quality includes the delivery of teaching materials, learning methods, and ultimately the academic results of students. Performance of lecturers contributes significantly to the quality of research and community service which in turn improves the quality of teaching materials. It is desirable, therefore, to have a method to measure the performance of lecturers in carrying out the *Tri Dharma* (or the three responsibility) activities, which consist of teaching and learning process, research, and community service activities, including publications at both national and international level. This study seeks to measure the performance of lecturers and cluster them into three categories, namely "satisfactory", "good", and "poor". Data were taken from academic works of nursing study program lecturers in conducting academic activities. Clustering process is carried out using two machine learning approaches, which is K-Means and K-Medoids algorithms. Evaluation of the clustering results suggests that K-Medoids algorithm performs better compared to using K-Means. DBI score for clustering techniques using K-Means is -0.417 while the score for K-Medoids is -0.652. The significant difference in the score shows that K-Medoids algorithm works better in determining the performance of lecturers in carrying out *Tri Dharma* activities.

Keywords: machine learning; data mining; k-medoids; lecturer performance; k-means

Article info: *submitted October 22, 2019, revised January 28, 2020, accepted April 5, 2020*

1. Introduction

Performance appraisal is an activity usually carried out by an organization or institution. Performance appraisal is an organized, structured, and periodic process for observing individual performance and institutional productivity in accordance with predetermined organizational criteria and goals [1]. Performance appraisal has similar meaning with evaluation of performance [2].

Performance appraisal is implemented in many organizations and in case of universities, it means to assess the performance of lecturers [3]. Lecturers are important stakeholders for tertiary education institutions and they play the role as both educators and scientists. Lecturers have responsibilities to explore new knowledge and disseminate to ordinary people and students [4]. Performance evaluation of lecturers is important to evaluate the achievements of higher education institutions and to encourage lecturers to be productive. Lecturer activities under evaluation include teaching and learning activities, research activities as evidenced by the publication papers, and community service [5].

In many cases, lecturers performance is evaluated using a form of questionnaire to students. It assesses the aspect teaching and learning activities. Teaching evaluation alone is certainly not sufficient because lecturer activities are not only teaching but also doing research and community service. However, multicriteria performance appraisal requires a special calculation that involves items being examined. This paper describes the results of research to calculate performance figures using the data mining methods. Assessment aspects are transformed into attributes of data to be processed. We examine two different calculation methods namely K-Means and K-Medoids algorithms.

Data mining is a machine learning approach that seeks to find knowledge from a big set of available data utilizing artificial intelligence techniques, statistics, and mathematics. Data mining is usually operated against large amounts of data stored in databases, warehouses, or other repositories [6]. Data mining is often referred to as an effort to find knowledge in databases or Knowledge Discovery in Databases (KDD) [7].

Many papers have discussed the application of data mining to data from higher education institutions. The requirements include predicting the length of study of students, assessment of student

performance, lecturer performance, determination of college promotion strategies, selection of scholarship grantees, and evaluation of learning outcomes of alumni. The application of data mining has been carried out to gain new knowledge about the behavior of leaders, students, alumni, lecturers, and university staffs which utilized decision support systems and assisted managers in making decisions [8]. Twijri and Noaman revealed that data mining in tertiary institutions is one area of research that is rapidly developing and has quickly become popular because of its benefits for the institutions [9]. Romero et al. stated that there had been an increase in research interest to apply data mining methods in the educational sector, so that a new term had emerged called Education Data Mining. The research was very useful to reveal student behavior, assist instructors, improve teaching quality, assess and improve e-learning systems, and improve curricula [10].

Chalaris et al. revealed that the educational process can be improved through decision making on various processes by utilizing existing knowledge in the organization's database or through collecting data with questionnaires, which are then extracted using data mining [11]. Data mining techniques are very useful in marketing analysis, analysis of student acceptance selection, predicting student performance, planning curriculum, analyzing learning outcomes, and maximizing the efficiency of the educational process [12, 13].

Data mining is a process of exploration and analysis in an automatic or semi-automatic way to find meaningful patterns and rules on large amounts of data [14]. Data mining is one of the most common methods used to investigate information, patterns, and relationships that have not yet been explored [15]. Data mining provides benefits in many fields including e-commerce, bioinformatics and education known as Educational Data Mining (EDM) [16, 17].

The description related to the application of data mining and its application in the world of education inspires the author to observe the application of data mining for assessing lecturer performance. Two data mining methods were tested namely K-Means and K-Medoids. K-means clustering algorithm is a data mining technique that groups data based on the distance closest to the cluster center. While the K-medoids algorithm or also known as PAM (Partitioning Around Medoids) uses the clustering partitioning method to find the k cluster for object n, by first finding the initial object randomly (medoid) as a representation for each cluster. Each remaining object is grouped with the most similar medoid. The k-medoid method uses a representative object as a reference point and not the average object per cluster. The algorithm takes the input parameter k the number of clusters to be partitioned between a set of objects n.

2. Method

There are two major processes carried out in this research, namely data mining and evaluation or validation. The data mining process has four main stages, namely (a) data collection, (b) data preprocessing, (c) data mining and (d) analysis [18]. Evaluation or validation is done by clustering algorithm (see figure 1).

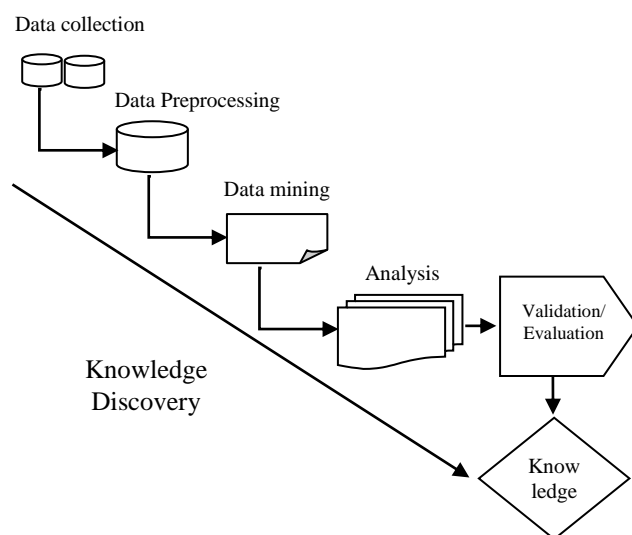


Figure 1. Knowledge Acquisition with data mining

A. Data collection

Data for this study were obtained from the *Tri Dharma* activities of a Higher Education institution. The data includes aspects of teaching, research, and community service. Data related to the teaching aspect was obtained from the Quality Assurance Unit. Data on research and community service activities was obtained from Research and Community Service Unit, and data on lecture evaluation by students was obtained from the Academic Administration Unit.

B. Data preprocessing

Preprocessing is needed to prepare data before the main data mining process is carried out. Preprocessing has several purposes such as cleaning data from typos, and filling in table columns so they are not empty which can cause failures in computation. Preprocessing is also to reduce the dimensions of the data and adjust the attributes so that calculation may be simplified. Preprocessing in this study includes grouping the raw data into the categories of teaching, research and community service, so that this process produces accumulated values in all of the three aspects.

C. Data mining

Data mining method in this study is basically clustering. Clustering techniques is an unsupervised learning method which partitions objects in a data set into several groups. There are many algorithms that apply distance equations such as Euclidean Distance [19] to determine the similarity of data, which is the basis for determining whether an object goes into a particular cluster [20]. This study examines two clustering techniques for grouping lecturers based on their performance. The two clustering techniques are K-means and K-medoids.

K-Means clustering is a data grouping technique that breaks a set of objects into k clusters based on the closest distance of an object to a centroid cluster. The steps of the K-means clustering algorithm applied in this study are as follows [21] (see also Figure 2).

Stage 1: Determine the number of clusters in the preprocessing dataset

- Stage 2: Randomly select an object from each cluster to be the center location of the initial cluster or centroid
- Stage 3: Group objects according to the distance closest to the centroid
- Stage 4: Recalculate the centroid of each cluster formed to update the centroid location
- Stage 5: Repeat steps 3 through 5 until no object has moved to another cluster.

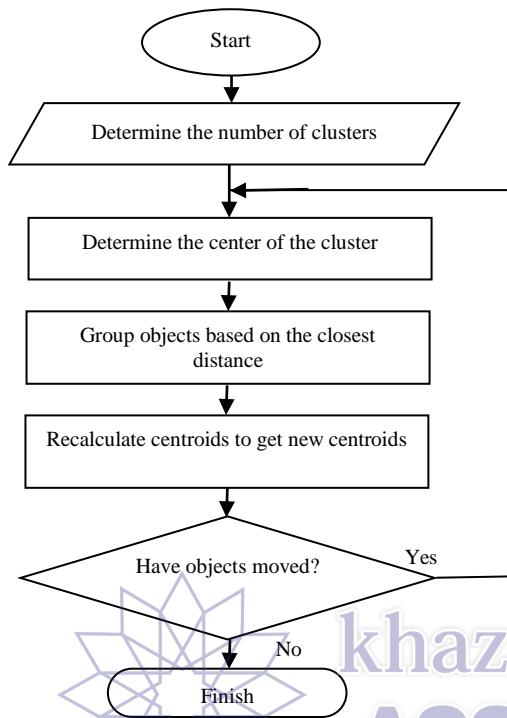


Figure 2. K-means algorithm flowchart

K-medoids are also often referred to as the PAM (Partitioning Around Medoids) algorithm which also breaks the set of objects into k clusters. The stages of clustering with the K-medoids technique are as follows [26] (see also Figure 3).

- Stage 1: Initialize the cluster center by the number of clusters (k)
- Stage 2: Each data or object is entered into the closest cluster based on Euclidian Distance
- Stage 3: Randomly select objects as new medoids candidates in each cluster
- Stage 4: Each object in each cluster is calculated its distance from the new medoid candidate.
- Stage 5: Calculate the total deviation (S) by calculating the value of total new distance - total old distance. If $S < 0$ is obtained, exchange the object with the data cluster to create a new set of k objects as medoids
- Stage 6: Repeat steps 3 through 5 until there is no change in the medoid, so that clusters and cluster members are obtained.

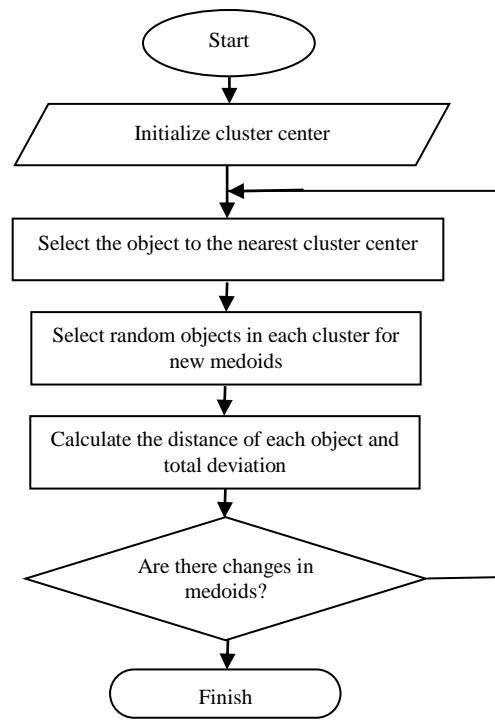


Figure 3. K-medoids algorithm flowchart

D. Analysis

The analysis phase is carried out to get the pattern of lecturer performance grouping. The tool used is Rapid Miner. This tool is widely used in data science, including for data preparation, machine learning, text mining, and predictive analysis [22].

E. Evaluation/validation

The evaluation process is carried out using the Davies-Bouldin Index (DBI) approach. DBI was developed in 1979 by David L. Davies and Donald W. Bouldin using the DBI metric to evaluate the performance of clustering algorithms [23]. This evaluation metric measures the distance between clusters and the level of data grouping within the cluster. If the DBI value is small, the distance between large clusters and the distance of objects in small clusters is a sign that clustering is optimal.

3. Result and Discussion

A. Data Collection

Data mining process using K-Means and K-Medoids begins with collecting data. Samples were taken from lecturer performance data from two study programs in Universitas Muhammadiyah Kalimantan Timur. The attributes specified are teaching performance scores, research performance scores and community service activities.

Teaching performance scores are calculated against Instructional Development Training activities (known as PEKERTI), applied approach (AA), writing textbooks / references, literary works, developing learning methods and lecturers evaluation by students. Research performance scores

were obtained from the attributes of intellectual property rights, international-level keynote/invited speakers, national-level keynote/invited speakers, papers in reputable international journals, papers in accredited national journals, papers in national journals, works of art, sports achievements and awards. Whereas

the score for community service is derived from the attributes of technology implementation, environmental management, technology application, community empowerment, and partnership development (see Table 1-3).

Table 1. Data collection on teaching aspects

Number	Respondents	PEKERTI	AA (<i>Applied Approach</i>)	Text Books	Literature work	Development of Learning methods	Lecturer Evaluation by Students (EDOM)
1	Lecturer 1	Yes	Yes	-	-	-	9
2	Lecturer 2	-	Yes	-	-	-	9
3	Lecturer 3	-	Yes	Yes	-	-	9
4	Lecturer 4	Yes	Yes	-	-	-	9
5	Lecturer 5	Yes	-	-	-	-	9
6	Lecturer 6	-	-	-	-	-	9
7	Lecturer 7	Yes	-	-	-	-	9
8	Lecturer 8	Yes	-	-	-	-	9
9	Lecturer 9	Yes	-	-	-	-	9
10	Lecturer 10	-	-	-	-	-	9
11	Lecturer 11	-	-	-	-	-	9
12	Lecturer 12	-	-	-	-	-	9
13	Lecturer 13	Yes	-	-	-	-	9
14	Lecturer 14	Yes	-	-	-	-	9
15	Lecturer 15	Yes	-	-	-	-	9
16	Lecturer 16	Yes	-	-	-	-	9
17	Lecturer 17	Yes	-	-	-	-	9
18	Lecturer 18	-	-	-	-	-	9
19	Lecturer 19	Yes	-	-	-	-	9
20	Lecturer 20	Yes	-	-	-	-	9
21	Lecturer 21	Yes	-	-	-	-	9
22	Lecturer 22	-	-	-	-	-	9
23	Lecturer 23	-	-	-	-	-	9
24	Lecturer 24	Yes	-	-	-	-	9
25	Lecturer 25	-	-	-	-	-	9

Table 2. Data collection of research aspects

Number	Respondent	IPR	Keynote speaker/ International invitation	Keynote speaker/ National invitation	Reputable international journal	Accredited national journal	National Journal	Art works	Sports work	Awards
1	Lecturer 1	Yes	-	Yes	-	Yes	Yes	-	-	-
2	Lecturer 2	Yes	-	-	-	-	Yes	-	-	-
3	Lecturer 3	-	-	Yes	Yes	-	Yes	-	-	-
4	Lecturer 4	-	-	-	-	-	Yes	-	-	-
5	Lecturer 5	-	-	-	-	-	Yes	-	-	-

6	Lecturer 6	-	-	-	-	-	Yes	-	-	-
7	Lecturer 7	-	-	-	-	-	Yes	-	-	-
8	Lecturer 8	-	-	-	-	-	Yes	-	-	-
9	Lecturer 9	Yes	-	-	-	Yes	Yes	-	-	-
10	Lecturer 10	-	-	-	-	-	Yes	-	-	-
11	Lecturer 11	-	-	-	-	-	Yes	-	-	-
12	Lecturer 12	-	-	-	-	-	Yes	-	-	-
13	Lecturer 13	-	-	-	-	-	Yes	-	-	-
14	Lecturer 14	-	-	-	-	Yes	Yes	-	-	-
15	Lecturer 15	-	-	-	-	Yes	Yes	-	-	Yes
16	Lecturer 16	Yes	-	-	-	Yes	Yes	-	-	-
17	Lecturer 17	-	-	-	-	-	Yes	-	-	-
18	Lecturer 18	-	-	-	-	-	-	-	-	-
19	Lecturer 19	-	-	Yes	Yes	Yes	Yes	-	-	-
20	Lecturer 20	-	-	-	-	Yes	Yes	-	-	-
21	Lecturer 21	-	-	-	-	Yes	Yes	-	-	-
22	Lecturer 22	-	-	-	-	-	-	-	-	-
23	Lecturer 23	-	-	-	-	-	-	-	-	-
24	Lecturer 24	-	-	-	-	-	Yes	-	-	-
25	Lecturer 25	-	-	Yes	Yes	-	Yes	-	-	-

Table 3. Data collection of community service aspects

Number	Respondent	Appropriate technology	Environmental management	Application of technology	community development	Partnership Development
1	Lecturer 1	-	-	Yes	Yes	-
2	Lecturer 2	-	-	Yes	Yes	-
3	Lecturer 3	-	-	Yes	Yes	-
4	Lecturer 4	-	-	Yes	Yes	-
5	Lecturer 5	-	-	Yes	Yes	-
6	Lecturer 6	-	-	Yes	Yes	-
7	Lecturer 7	-	-	Yes	Yes	-
8	Lecturer 8	-	-	Yes	Yes	-
9	Lecturer 9	-	-	Yes	Yes	-
10	Lecturer 10	-	-	Yes	Yes	-
11	Lecturer 11	-	-	Yes	Yes	-
12	Lecturer 12	-	-	Yes	Yes	-
13	Lecturer 13	-	-	Yes	Yes	-
14	Lecturer 14	-	-	Yes	Yes	-
15	Lecturer 15	-	-	Yes	Yes	-
16	Lecturer 16	-	-	Yes	Yes	-
17	Lecturer 17	-	-	Yes	Yes	-
18	Lecturer 18	-	-	Yes	Yes	-

19	Lecturer 19	-	-	Yes	Yes	-
20	Lecturer 20	-	-	Yes	Yes	-
21	Lecturer 21	-	-	Yes	Yes	-
22	Lecturer 22	-	-	Yes	Yes	-
23	Lecturer 23	-	-	Yes	Yes	-
24	Lecturer 24	-	-	Yes	Yes	-
25	Lecturer 25	-	-	Yes	Yes	-

B. Data pre-processing

The pre-processing phase is carried out to change the dimensions of raw data into data with the attribute scores of teaching performance, research, and community service. Scoring of each attribute is carried out based on Operational Guidelines for Assessing Credit Scores for Academic Promotion / Lecturer Rank, Directorate General of Science and Technology Resources and Higher Education, Ministry of Research, Technology and Higher Education in 2019 [24]. Teaching performance scores are the accumulation of each PEKERTI attribute credit score,

applied approach, textbooks or references, literary works, development of learning methods and EDOM. The research score is an accumulation of each IPR attribute credit score, international and national keynote / invited speakers, reputable international journal publications, accredited national journals, national journals, works of art, sports achievements, awards. Then the community service performance score is an accumulation of each credit score attributes of appropriate technology service, environmental arrangement, technology application, community empowerment and partnership development.

Table 4. Pre-processing results

Number	Respondent	Teaching aspects	Research aspects	The aspect of community service	Total
1	Lecturer 1	39	85	6	130
2	Lecturer 2	24	50	6	80
3	Lecturer 3	44	60	6	110
4	Lecturer 4	39	10	6	55
5	Lecturer 5	24	50	6	80
6	Lecturer 6	9	10	6	25
7	Lecturer 7	24	50	6	80
8	Lecturer 8	24	10	6	40
9	Lecturer 9	24	75	6	105
10	Lecturer 10	9	10	6	25
11	Lecturer 11	9	50	6	65
12	Lecturer 12	9	10	6	25
13	Lecturer 13	39	10	6	55
14	Lecturer 14	24	35	6	64
15	Lecturer 15	39	55	6	100
16	Lecturer 16	24	75	6	105
17	Lecturer 17	39	10	6	55
18	Lecturer 18	24	0	6	30
19	Lecturer 19	39	45	6	90
20	Lecturer 20	24	35	6	65
21	Lecturer 21	24	35	6	65
22	Lecturer 22	9	0	6	15

23	Lecturer 23	9	0	6	15
24	Lecturer 24	24	10	6	40
25	Lecturer 25	9	20	6	35

C. Data mining

Preprocessing data is processed using Rapidminer. The clustering process is carried out into three categories by applying the K-means algorithm and K-medoids techniques.

The process of applying the K-Means algorithm with Rapidminer begins with determining the centroid value. Because it is desirable to cluster into three categories, 3 centroids are generated, namely one for each cluster (see table 5).

Table 5. K-means Centroid

Attribut	Cluster_0	Cluster_1	Cluster_2
Total	66,500	27,778	100,667

Clustering means the process of grouping data into one cluster by determining the proximity of data points on the centroid. The results of clustering with Rapidminer produce 10 data items entered into Cluster_0, 9 data items entered into cluster_1 and 6 items entered into cluster_2. Clusters_1 with the smallest centroid value are labeled as cluster Poor, Clusters_0 with medium centroid value are well labeled, and Clusters_2 with high centroid value are labeled as satisfactory. Membership of each cluster can be seen in Table 6.

Table 6. K-Means clustering result

Cluster category	Amount	Members of the group
Poor	9	Lecturer 6
		Lecturer 8
		Lecturer 10
		Lecturer 12
		Lecturer 18
		Lecturer 22
		Lecturer 23
		Lecturer 24
		Lecturer 25
Good	10	Lecturer 2
		Lecturer 4
		Lecturer 5
		Lecturer 7
		Lecturer 11
		Lecturer 13
		Lecturer 14
		Lecturer 17
		Lecturer 20
		Lecturer 21
Satisfactory	6	Lecturer 1
		Lecturer 3
		Lecturer 9
		Lecturer 15

Lecturer 16
Lecturer 19

The application of the K-Medoids algorithm also begins with the determination of three centroids for the 3 targeted clusters. Centroid values obtained when processing data with Rapidminer are shown in Table 7 with different centroid values from the centroid determination results for the K-Means method. Clusters with satisfactory labels have centroids at the number 90, while clusters with good and bad labels have centroids of 65 and 35 respectively..

Table 7. K-medoids Centroid

Attribut	Cluster_0	Cluster_1	Cluster_2
Total	90,00	35,00	65,00

Clustering with the K-Medoids method produces a number of data items that are somewhat different for each cluster. Cluster_0 which has a satisfactory label has 9 members. Cluster_1 with the label is not good getting 9 data items. Whereas Cluster_2 with good label gets 7 data items (see Table 8).

Table 8. K-medoids clustering result

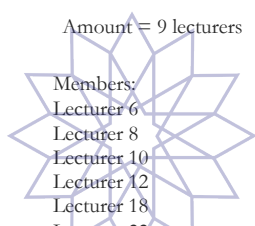
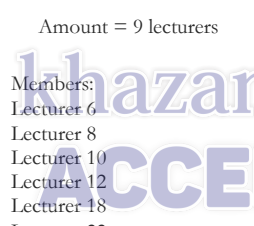
Cluster category	Amount	Members of the group
Poor	9	Lecturer 6
		Lecturer 8
		Lecturer 10
		Lecturer 12
		Lecturer 18
		Lecturer 22
		Lecturer 23
		Lecturer 24
		Lecturer 25
Good	7	Lecturer 4
		Lecturer 11
		Lecturer 13
		Lecturer 14
		Lecturer 17
		Lecturer 20
Satisfactory	9	Lecturer 1
		Lecturer 2
		Lecturer 3
		Lecturer 5
		Lecturer 7
		Lecturer 9
		Lecturer 15

D. Analysis

Table 5-8 shows that clustering with the K-Means and K-Medoids methods gives different results in many ways. The centroid point calculation results give different values for the same cluster label. For example, for the cluster Satisfactory, the K-Means method places the centroid at a value of 100.7 while the K-Medoids method puts the centroid at a value of 90.0. As a result, it certainly can be expected, the number of data items entered into each cluster becomes different.

Furthermore, it can be seen in Table 9 that shows how the two methods place each data item in a cluster. to group data items into the same and different categories. Both methods put 9 of the same data items into the cluster Poor. Meanwhile, the K-Means method places 10 data items in a cluster Good and 6 data items in the cluster Satisfactory. The K-Medoids method places 7 data items in either cluster and 9 data items in cluster Satisfactory. Cluster placement discrepancies occur for Lecturer 2, Lecturer 5 and Lecturer 7 data items. All three data items have the same attribute values based on the pre-processing data in Table 4.

Table 9. Comparison of clusters between K-means and K-medoids techniques

Cluster category	K-means	K-medoids
Poor	 <p>Amount = 9 lecturers</p> <p>Members: Lecturer 6 Lecturer 8 Lecturer 10 Lecturer 12 Lecturer 18 Lecturer 22 Lecturer 23 Lecturer 24 Lecturer 25</p>	 <p>Amount = 9 lecturers</p> <p>Members: Lecturer 6 Lecturer 8 Lecturer 10 Lecturer 12 Lecturer 18 Lecturer 22 Lecturer 23 Lecturer 24 Lecturer 25</p>
	<p>Amount = 10 lecturers</p> <p>Members: Lecturer 2 Lecturer 4 Lecturer 5 Lecturer 7 Lecturer 11 Lecturer 13 Lecturer 14 Lecturer 17 Lecturer 20 Lecturer 21</p>	<p>Amount = 7 lecturers</p> <p>Members: Lecturer 4 Lecturer 11 Lecturer 13 Lecturer 14 Lecturer 17 Lecturer 20 Lecturer 21</p>
Satisfactory	<p>Amount = 6 lecturers</p> <p>Members: Lecturer 1 Lecturer 3 Lecturer 9 Lecturer 15 Lecturer 16</p>	<p>Amount = 9 lecturers</p> <p>Members: Lecturer 1 Lecturer 2 Lecturer 3 Lecturer 5 Lecturer 7</p>

E. Evaluation/validation

Clustering with two different methods, namely K-Means and K-Medoids has resulted in a somewhat different data cluster. The next question is which method gives better or more accurate results. To answer this question, a standardized or agreed-upon measuring instrument is needed. One of the measurement tools that can be used to determine which method is more optimal in the clustering process is the Davies-Bouldin Index (DBI). The more optimal clustering results will have a smaller DBI value. Table 10 presents the DBI values for the results of lecturer performance data clustering using the K-Means method (first row) and K-Medoids (second row). DBI results from clustering using the K-Means method are -0.417 while DBI results from clustering using the K-Medoids method are -0.652. The DBI number indicates that the K-Medoids method in this situation results in more optimal clustering than the K-Means method.

Table 10. Comparative evaluation results between K-means and K-medoids

Numb	Clustering Technique	DBI evaluation value
1	K-Means	-0.417
2	K-medoids	-0.652

4. Conclusion

In this research, we have conducted a clustering process on lecturer performance data in carrying out teaching activities, research and publications, as well as community service. Data obtained from records of lecturer activities in two study programs, i.e. Nurse and Pharmacy. We examine 6 attributes of teaching activities, 9 attributes of research and publication activities, and 5 attributes of community service activities. In pre-processing, a score is put for each activity based on the Credit Score Assessment Guidelines for Academic Promotion of Lecturers, then reducing the dimensions by accumulating scores for each activity.

We examine two clustering methods, namely K-Means and K-Medoids. Both methods provide three clusters with three different centroid points. Placement of data items into each cluster is somewhat different. Both clustering methods place 9 of the same data items into cluster Poor. The K-Means method places 10 data items in cluster Good and 6 data items in the cluster Satisfactory. Whereas the K-Medoids method places 7 data items in cluster Good and 9 data items in cluster Satisfactory. Evaluation of the clustering results with DBI (Davies Bouldin Index) gives a value of -0.417 for the K-Means method and a value of -0.652 for the K-Medoids method. The last fact suggests that the K-Medoids method shows better clustering results than K-Means.

Reference

- [1] J. Abu-Doleh, and D. Weir, "Dimensions of performance appraisal systems in Jordanian private and public organizations," *International Journal of Human Resource Management*, 18(1), 75-84, 2007
- [2] P. M. Muchinsky, *Psychology Applied to Work (10th ed.)*, Summerfield, NC: Hypergraphic Press, 2012
- [3] T. T. Bi Dan, S. W. Sihwi & R. Anggrainingsih, "Implementasi Iterative Dichotomiser 3 Pada Kasus Data Kelulusan Mahasiswa S1 Di Universitas Sebelas Maret," *Jurnal ITSMART* Vol. No. 2 ISSN : 2301-7201, 84-91, 2015
- [4] Horison & Faisal, "Undang-undang Republik Indonesia No 14 Tahun 2005 tentang Guru dan Dosen." di <http://jtsiskom.undip.ac.id> (30 April 2017) DOI: 10.14710/jtsiskom.5.2.2017.89-93 , JTSiskom, e-ISSN:2338-0403, 2017
- [5] Lubna, "Akurasi Dan Akuntabilitas Penilaian Kinerja Guru Pendidikan Agama Islam, *Jurnal Studi Keislaman*", vol. 18. no. 1, 2014
- [6] E. Turban, J.E. Aronson and T.P. Liang, *Decision Support System and Intelligent Systems – 7 th ed.* Pearson Education, Inc. Pearson Education, Inc, 2005
- [7] J. Han and M. Kamber, *Data Mining: Concepts and Techniques*, Morgan Kaufmann, 2000
- [8] N. Delavari, Alaa M. El-Halees, Dr. M. Reza Beikzadeh, "Application of Enhanced Analysis Model for Data Mining Processes in Higher Educational System," In Proceedings of 6th International Conference ITHET 2005 IEEE, 2005
- [9] Al-Twijri, & A.Y. Noaman, "A New Data Mining Model Adopted for Higher Institutions." International Conference on Communication, Management and Information Technology (ICCMIT 2015) *Procedia Computer Science* 65 (2015) 836 – 844, 2015.
- [10] C. Romero, & S. Ventura, Educational data mining: A review of the state of the art," *IEEE Trans. Syst., Man, Cybern. C, Appl. Rev.*, vol. 40,no. 6, pp. 601–618, Nov. 2010
- [11] M. Chalaris, S. Gritzalis, M. Maragoudakis, M. Sgouropoulou & A. Tsolakidis, "Improving Quality of Educational Processes Providing New Knowledge using Data Mining Techniques," *Procedia - Social and Behavioral Sciences* 147 (2014), 390 – 39, 2014
- [12] M. Goyal, and R. Vohra, "Applications of Data Mining in Higher Education," *IJCSI International Journal of Computer Science Issues*, Vol. 9, Issue 2, No 1, March 2012
- [13] Y. Zhang, S. Oussena, T. Clark & H. Kim, "Use data mining to improve student retention in higher education. A case study," In Proceedings of ICEIS, 2010
- [14] X. Zhu & I. Davidson, *Knowledge Discovery and Data Mining: Challenges and Realities*, ISBN 9781 - 59904 - 252, Hershey, New York, 2007
- [15] B. K. Baradwaj & S. Pal, "Mining Educational Data to Analyze Students' Performance," (*IJACSA*) *International Journal of Advanced Computer Science and Applications*, Vol. 2, No. 6, 2011
- [16] R. S. J. Baker & K. Yacef, "The State of Educational Data Mining in 2009: A Review and Future Visions," *Journal of Educational Data Mining* 1 (1): 3 – 17, 2009.
- [17] M. A. Tair and A. M. El-Halees, "Mining Educational Data to Improve Students' Performance," *International Journal of Information and Communication Technology Research*, 2012
- [18] E. Prasetyo, *Data Mining Mengolah Data Menjadi Informasi Menggunakan Matlab*, Yogyakarta, Penerbit ANDI, 2014
- [19] B. Venkateswarlu, & P. G. Raju, "Mine Blood Donors Information through Improved K-Means Clustering," *arXiv preprint arXiv:1309.2597*, 2013
- [20] E. Sugiharti & M. A. Muslim, "On-line Clustering of Lecturers Performance of Computer Science Department of Semarang State University Using K-Means Algorithm," *Journal of Theoretical and Applied Information Technology*, 83(1), 2016.
- [21] J. Han, M. Kamber, and J. Pei, *Data Mining Concepts and Technique Third Edition*. 2012
- [22] Wikipedia, rapidminer, diakses tanggal 24 november 2019, dari <https://id.wikipedia.org/wiki/RapidMiner>
- [23] Irhamni F, Damayanti F, Khusnul K B & A Miffatchul. Optimalisasi Pengelompokan Kecamatan Berdasarkan Indikator Pendidikan Menggunakan Metode Clustering Dan Davies Bouldin Index. Seminar Nasional Sains dan Teknologi 2014. Jakarta. 2014 : 1-5.
- [24] Pedoman Operasional Penilaian Angka Kredit Kenaikan Jabatan Akademik/ Pangkat Dosen <https://lldikti12.ristekdikti.go.id/2019/03/08/pedoman-operasional-penilaian-angka-kredit-dosen-tahun-2019.html>